

Surge Battery Metals Inc. is a Canadian based exploration company focused on locating & developing high value deposits of clean energy battery metals that are vital to the rapidly growing electric vehicle (EV) market.

\$3.6M CAD in treasury from financings in 2021

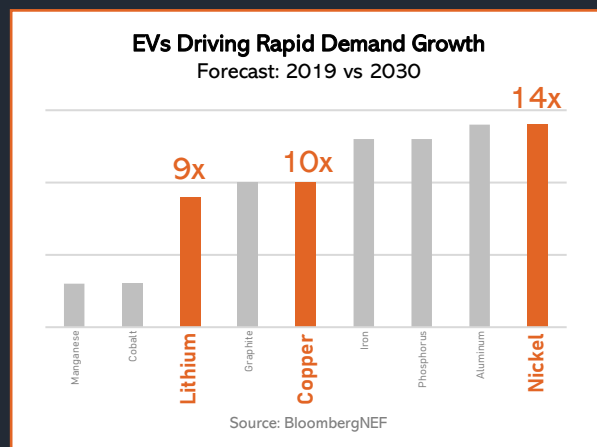
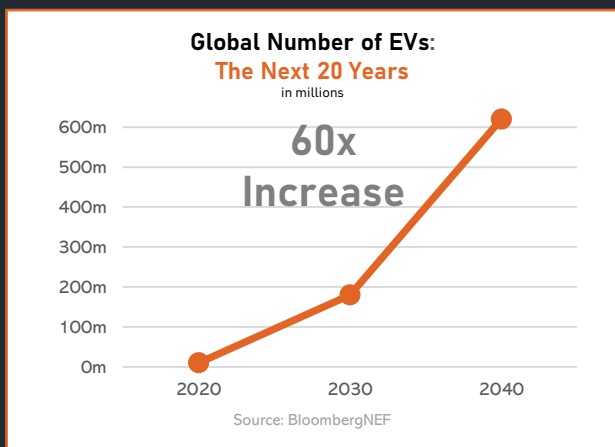
Fully funded for 2022 corporate plans

Targeting battery metals with rapid demand growth

Developing copper and nickel projects in BC & lithium projects in Nevada

Electric vehicles (EVs) represent a **\$7 trillion** global market opportunity between today and 2030 and **\$46 trillion** between now and 2050.¹

We only target battery metals that have rapid demand growth forecasts and that are positioned to outperform in the market.

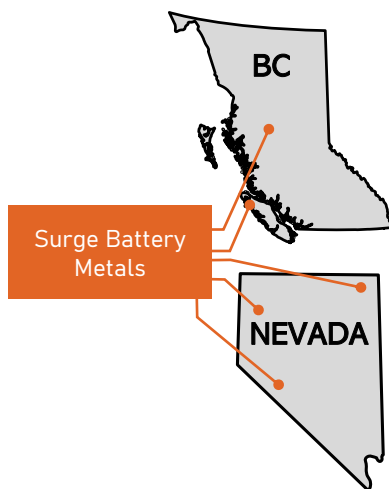


1. <https://www.mining.com/ev-sales-expected-to-rise-by-2040-push-battery-metals-demand-report>

Our Battery Metals Projects are in Prolific, World-Class Mining-Friendly Jurisdictions

British Columbia, Canada has an abundance of minerals, skilled labour and the specialized equipment and facilities to support exploration and development.

Nevada, USA was ranked the #1 mining jurisdiction in the world for Investment Attractiveness in 2020 by the Fraser Institute, is home to America's only current lithium production, and is ideally suited to supply domestic and Asian markets.



Team

Greg Reimer, President & CEO
Former Executive VP of BC Hydro's Transmission & Distribution business group

Gordon Jung, Director
Bill Macdonald, Director
Robert Culbert, Director
Konstantin Lichtenwald, CFO
Tina Whyte, Corporate Secretary

Advisors

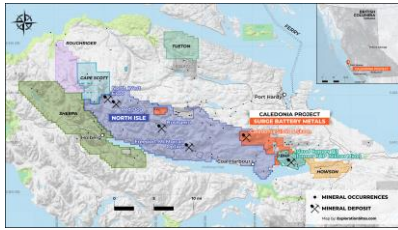
James Hellwarth, Strategic Advisor
Chip Richardson, Strategic Advisor
Bill Morton, MSc. P.Geo., Geological Advisor
Ali H. Alizadeh, Geological Advisor
Alan Morris, CPG, Geological Advisor
Jacques Houle, P.Eng., Geological Advisor
Jeremy Hanson, P.Eng. Geological Advisor

Corporate Contacts

Legal: William M. McDonald Attorney, Barrister & Solicitor
Auditor: DMCL Chartered Professional Accountants
Transfer Agent: Odyssey Trust Company

CALEDONIA COPPER PROJECT (BC, CANADA)

Our Caledonia Copper Project is adjacent to a **Freeport-McMoRan JV** partnership and is 7 km (4.4 mi) from **BHP's** past producing **Island Copper Mine**, formerly Canada's third-largest copper producer (extracted 345 million metric tonnes @ 0.41% copper).

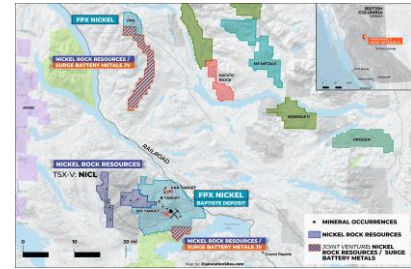


7 mineral claims in 1 group | 1,741 ha (4,302 acres)
100% interest | 2% NSR

Detailed exploration program currently being planned for 2022

HN4 & N100 NICKEL GROUPS (BC, CANADA)

HN4 Group: Bordering or in close proximity to **FPX Nickel Corp.'s Decar Project** & their potentially carbon neutral Baptiste deposit that's confirmed as one of the world's most robust large-scale nickel projects.



N100 Group: Confirmed elevated values of nickel, cobalt and chromium in rocks and stream sediments, and documented presence of **awaruite**.

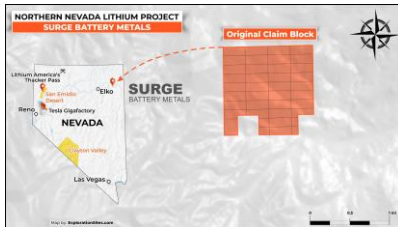
2 non-contiguous mineral claims groups consisting of 6 mineral claims (HN4) covering 1,863 hectares (~4,603 acres) immediately south of and adjacent to the Decar Project, and (N100) covering 8,659 hectares (~21,396 acres)

Option to earn 80% (with 20% held by Nickel Rock Resources) | 2% NSR (3 claims - HN4 claim & the 2 southernmost claims of the N100 claims)

2022 Work Plan: prospecting, geological mapping, rock soil sampling, diamond drill program

NORTHERN NEVADA LITHIUM PROJECT (NEVADA, USA)

Our very early-stage Northern Nevada Lithium Project's target is a lithium clay deposit of the type of **Lithium America's Thacker Pass** – one of America's largest lithium deposits – or Nevada's Clayton Valley, home to **America's only current lithium production**.



95 claims in 1 group
100% interest | 1% NSR

Exploration plans: Grid soil survey & geologic mapping to identify favorable horizons for drill testing; geologic & exploration work to identify source beds of anomalous sediments

SAN EMIDIO LITHIUM PROJECT (NEVADA, USA)

The San Emidio Lithium Project's geologic setting, combined with the presence of lithium in both active geothermal fluids and surface salts within the San Emidio Property, match characteristics of lithium brine and clay deposits at **Clayton Valley, Nevada** – home to America's only current lithium production – and in **South America**.



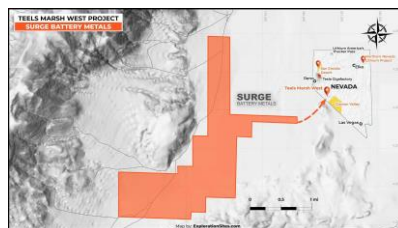
60 mineral claims | ~1,942 hectares (4,800 acres)

Option to earn undivided 80% interest (with 20% held by Lithium Corporation)

Exploration Plans: Recent exploration results are highly encouraging and warrant a detailed exploration drilling for a Clayton Valley type brine and clay deposit

TEELS MARSH WEST LITHIUM PROJECT (NEVADA, USA)

The Teels Marsh West Project is highly prospective for lithium brines and is located on the western part of a large evaporation pond or playa.



The project is ~48 miles (~77 km) northwest of Clayton Valley and the Rockwood Lithium mine, North America's only producing brine-based lithium mine, which has been supporting lithium production since 1967.

100 placer claims | 809 hectares (2,000 acres) | 100% interest | No royalties

Exploration plans: Detailed exploration program currently being planned for 2022

Share Structure

Issued & Outstanding	89,366,916
Stock Options Outstanding	8,193,000
Warrants Outstanding	13,170,833
Fully Diluted	110,730,749

Share Performance*

Market Cap:	\$13.43M
Price:	\$0.20
52-Wk Low:	\$0.06
52-Wk High:	\$0.38
Avg Volume:	113,259



*TSXV:NILI as of Nov. 18, 2021

View our corporate filings [here on SEDAR](#)

Contact us at info@surgebatterymetals.com or visit www.surgebatterymetals.com