

**Surge Battery Metals Inc.** is a Canadian based exploration company focused on locating & developing high value deposits of clean energy battery metals that are vital to the rapidly growing electric vehicle (EV) market.

\$3.6M CAD in treasury from financings in 2021

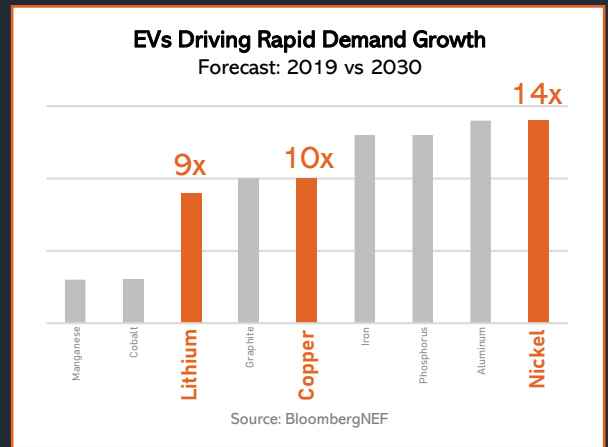
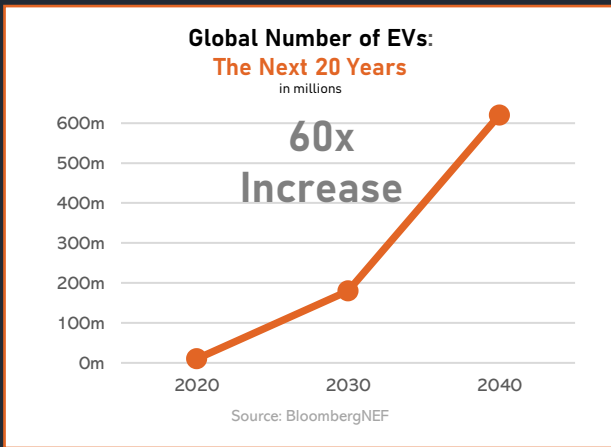
Fully funded for 2021 corporate plans

Targeting battery metals with rapid demand growth

Developing copper and nickel projects in BC & lithium projects in Nevada

Electric vehicles (EVs) represent a **\$7 trillion** global market opportunity between today and 2030 and **\$46 trillion** between now and 2050.<sup>1</sup>

We only target battery metals that have rapid demand growth forecasts and that are positioned to outperform in the market.

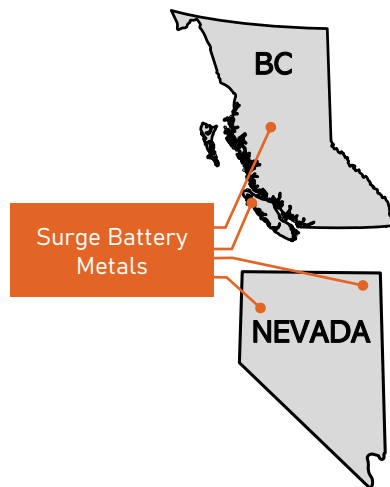


1. <https://www.mining.com/ev-sales-expected-to-rise-by-2040-push-battery-metals-demand-report>

## Our Battery Metals Projects are in Prolific, World-Class Mining-Friendly Jurisdictions

**British Columbia, Canada** has an abundance of minerals, skilled labour and the specialized equipment and facilities to support exploration and development.

**Nevada, USA** was ranked the #1 mining jurisdiction in the world for Investment Attractiveness in 2020 by the Fraser Institute, is home to America's only current lithium production, and is ideally suited to supply domestic and Asian markets.



## Team

**Greg Reimer, President & CEO**  
Former Executive VP of BC Hydro's Transmission & Distribution business group

Gordon Jung, Director  
Bill Macdonald, Director  
Robert Culbert, Director  
Konstantin Lichtenwald, CFO  
Tina Whyte, Corporate Secretary

## Advisors

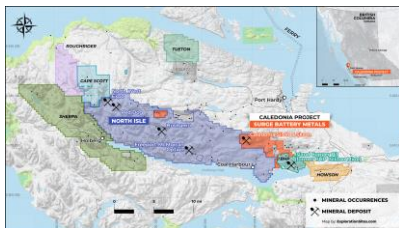
James Hellwarth, Strategic Advisor  
Chip Richardson, Strategic Advisor  
Bill Morton, MSc. P.Geo., Geological Advisor  
Ali H. Alizadeh, Geological Advisor  
Alan Morris, CPG, Geological Advisor  
Jacques Houle, P.Eng., Geological Advisor  
Jeremy Hanson, P.Eng. Geological Advisor

## Corporate Contacts

**Legal:** William M. McDonald Attorney, Barrister & Solicitor  
**Auditor:** DMCL Chartered Professional Accountants  
**Transfer Agent:** Odyssey Trust Company

## CALEDONIA COPPER PROJECT (BC, CANADA)

Our Caledonia Copper Project is adjacent to a **Freeport-McMoRan JV** partnership and is 7 km (4.4 mi) from **BHP's** past producing **Island Copper Mine**, formerly Canada's third-largest copper producer (extracted 345 million metric tonnes @ 0.41% copper).



7 mineral claims in 1 group | 1,741 ha (4,302 acres)

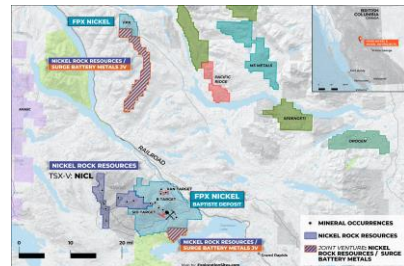
100% interest | 2% NSR

Detailed exploration program currently being planned for 2021

## HN4 & N100 NICKEL GROUPS (BC, CANADA)

**HN4 Group:** Bordering or in close proximity to **FPX Nickel Corp.'s Decar Project** & their potentially carbon neutral Baptiste deposit that's confirmed as one of the world's most robust large-scale nickel projects.

**N100 Group:** Confirmed elevated values of nickel, cobalt and chromium in rocks and stream sediments, and documented presence of **awaruite**.



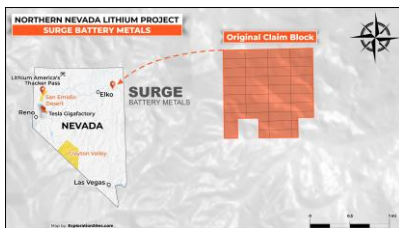
2 non-contiguous mineral claims groups consisting of 6 mineral claims (HN4) covering 1,863 hectares (~4,603 acres) immediately south of and adjacent to the Decar Project, and (N100) covering 8,659 hectares (~21,396 acres)

Option to earn 80% (with 20% held by Nickel Rock Resources) | 2% NSR (3 claims - HN4 claim & the 2 southernmost claims of the N100 claims)

**2021-2022 Work Plan:** prospecting, geological mapping, rock soil sampling, diamond drill program

## NORTHERN NEVADA LITHIUM PROJECT (NEVADA, USA)

Our very early-stage Northern Nevada Lithium Project's target is a lithium clay deposit of the type of **Lithium America's Thacker Pass** – one of America's largest lithium deposits – or Nevada's Clayton Valley, home to **America's only current lithium production**.



95 claims in 1 group

100% interest | 1% NSR

**Exploration plans:** Grid soil survey & geologic mapping to identify favorable horizons for drill testing; geologic & exploration work to identify source beds of anomalous sediments

## SAN EMIDIO LITHIUM PROJECT (NEVADA, USA)

The San Emidio Lithium Project's geologic setting, combined with the presence of lithium in both active geothermal fluids and surface salts within the San Emidio Property, match characteristics of lithium brine and clay deposits at **Clayton Valley, Nevada** – home to America's only current lithium production – and in **South America**.



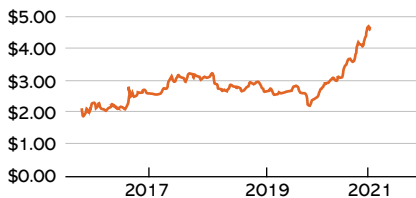
60 mineral claims | ~1,942 hectares (4,800 acres)

Option to earn undivided 80% interest (with 20% held by Lithium Corporation)

**Exploration Plans:** Recent exploration results are highly encouraging and warrant a detailed exploration drilling for a Clayton Valley type brine and clay deposit

### Copper price is at highest in 5 years

USD/lb



Source: Mining.com

### Share Structure

Issued & Outstanding	89,366,916
Stock Options Outstanding	8,193,000
Warrants Outstanding	13,170,833
Fully Diluted	110,730,749

### Share Performance\*

Market Cap:	\$13.43M
Price:	\$0.20
52-Wk Low:	\$0.06
52-Wk High:	\$0.38
Avg Volume:	113,259

\*TSXV:NILI as of Nov. 18, 2021



View our corporate filings [here on SEDAR](https://www.sedar.com)

Contact us at [info@surgebatterymetals.com](mailto:info@surgebatterymetals.com) or visit [www.surgebatterymetals.com](http://www.surgebatterymetals.com)